

K-Wires & Pins

K-Wires

Code:	Length:	Description:	Price:
0.024	7"	Double Trocar	\$5.00
0.027	7"	Double Trocar	\$3.50
0.032	7	Double Trocar	\$3.50
0.032T	7	Partially Threaded	\$8.00
0.045	7	Double Trocar	\$3.50
0.045T	7	Partially Threaded	\$6.00
0.054	8	Double Trocar	\$3.50
0.054T	8	Partially Threaded	\$6.00
0.062	8	Double Trocar	\$3.50
0.062T	8	Partially Threaded	\$6.00
0.071T	9	Partially Threaded	\$7.00

I.M Pins - Double Trocar, Smooth

Code:	Length:	Description:	Price:
1.16	8"	Double Trocar, Smooth	\$3.50
5.64	8	Double Trocar, Smooth	\$3.75
5.64 L	9	Double Trocar, Smooth	\$3.75
3.32	8	Double Trocar, Smooth	\$4.25
3.32 L	9	Double Trocar, Smooth	\$4.25
7.64	9	Double Trocar, Smooth	\$4.50
1.80	9	Double Trocar, Smooth	\$4.75
1.80 11"	11	Double Trocar, Smooth	\$6.50
1.80 L	12	Double Trocar, Smooth	\$4.75
9.64	10	Double Trocar, Smooth	\$5.00
5.32	12	Double Trocar, Smooth	\$8.00
3.16	12	Double Trocar, Smooth	\$9.00
1.40	12	Double Trocar, Smooth	\$10.00
5.16	12	Double Trocar, Smooth	\$14.00

I.M Pins - 1 Trocar Smooth, 1 Trocar Threaded

Code:	Length:	Description:	Price:
1.16T	8"	Smooth - Threaded	\$6.00
1.16T L	9	Smooth - Threaded	\$6.00
5.64T	8	Smooth - Threaded	\$6.25
5.64T L	9	Smooth - Threaded	\$6.25
3.32T	8	Smooth - Threaded	\$6.50
3.32T L	9	Smooth - Threaded	\$6.50
7.64T	9	Smooth - Threaded	\$6.75
1.80T	9	Smooth - Threaded	\$7.00
1.80T L	12	Smooth - Threaded	\$7.00
9.64T	10	Smooth - Threaded	\$7.25
5.32T	12	Smooth - Threaded	\$10.00
3.16T	12	Smooth - Threaded	\$13.00
1.40T	12	Smooth - Threaded	\$16.00
5.16T	12	Smooth - Threaded	\$20.00

Half Pins

Half Pins - 1 Trocar Smooth, 1 Flat End



Code:	Length:	Description:	Price:
0.027HP	4"	Smooth / Flat	\$3.00
0.032HP	4	Smooth / Flat	\$3.00
0.045HP	3.5	Smooth / Flat	\$3.00
0.054HP	4	Smooth / Flat	\$3.00
0.062HP	4	Smooth / Flat	\$3.25
1.16HP	4	Smooth / Flat	\$3.25
5.64HP	5	Smooth / Flat	\$3.75
3.32HP	4.5	Smooth / Flat	\$4.00
7.64HP	5	Smooth / Flat	\$4.10
1.80HP	4.5	Smooth / Flat	\$4.10
9.64HP	6	Smooth / Flat	\$4.30
5.32HP	6	Smooth / Flat	\$4.50
3.16HP	6	Smooth / Flat	\$5.00
1.40HP	6	Smooth / Flat	\$6.00
5.16HP	6	Smooth / Flat	\$7.25

Half Pins - 1 Trocar Threaded, 1 Flat End



Code:	Length:	Description:	Price:
0.032HPT	4"	Threaded / Flat	\$5.50
0.045HPT	4	Threaded / Flat	\$5.00
0.054HPT	4	Threaded / Flat	\$5.25
1.16HPT	4	Threaded / Flat	\$5.50
5.64HPT	4	Threaded / Flat	\$6.25
3.32HPT	4.5	Threaded / Flat	\$6.00
7.64HPT	4.5	Threaded / Flat	\$6.50
1.80HPT	4.5	Threaded / Flat	\$6.50
9.64HPT	6	Threaded / Flat	\$6.50
5.32HPT	6	Threaded / Flat	\$6.75
3.16HPT	6	Threaded / Flat	\$8.25
1.40HPT	6	Threaded / Flat	\$9.25
5.16HPT	6	Threaded / Flat	\$10.50

Fixation Pins

Fixation Half Pins - Positive, Cortical Thread



Code:	Size:	Length:	Shank:	Price:
I15020	5.64"	95mm	2.0mm	\$8.30
I15332	3.32	100	2.4	\$8.60
I1533L	3.32	150	2.4	\$8.85
I15764	7.64	110	2.8	\$8.95
I1576L	7.64	150	2.8	\$9.95
I15030	7.64	110	3.0	\$8.55
I15180	1.80	115	3.2	\$8.90
I1518L	1.80	150	3.2	\$9.95
I15964	9.64	130	3.5	\$9.60
I1596L	9.64	175	3.5	\$11.45
I15532	5.32	150	4.0	\$11.40
I1553L	5.32	200	4.0	\$12.55

Fixation Half Pins - Cancellous Thread



Code:	Size:	Length:	Shank:	Price:
I16332	3.32"	115mm	2.4mm	\$9.35
I1633L	3.32	150	2.4	\$11.35
I16180	1.80	125	3.2	\$11.65
I1618L	1.80	150	3.2	\$14.30
I16316	3.16	150	4.8	\$15.10
I1631L	3.16	200	4.8	\$16.85

Fixation Miniature Half Pins

Code:	Length:	Shank:	Price:
I03035	75mm	0.9mm	\$4.17
I03045	75	1.2	\$4.17
I03062	75	1.6	\$4.17
I03078	75	2.0	\$4.17
I03094	75	2.4	\$6.30

Fixation Pins

Fixation Pins - Positive, Cortical Center Thread



Code:	Size:	Length:	Shank:	Price:
I20020	5.64"	95mm	2.0mm	\$8.90
I20332	3.32	100	2.4	\$9.35
I2033L	3.32	150	2.4	\$10.40
I20764	7.64	115	2.8	\$11.20
I2076L	7.64	165	2.8	\$11.65
I20030	7.64	120	3.0	\$10.25
I20180	1.80	125	3.2	\$11.10
I2018L	1.80	175	3.2	\$11.65
I20964	9.64	140	3.5	\$12.30
I2096L	9.64	190	3.5	\$12.60
I20532	5.32	150	4.0	\$13.00
I2053L	5.32	200	4.0	\$15.60

Fixation Pins - Cancellous, Center Thread



Code:	Size:	Length:	Shank:	Price:
I21332	3.32"	100mm	2.4mm	\$11.55
I2133L	3.32	150	2.4	\$12.60
I21180	1.80	140	3.2	\$13.20
I2118L	1.80	175	3.2	\$14.20
I21316	3.16	150	4.8	\$16.90
I2131L	3.16	200	4.8	\$21.75

Fixation Half Pin - SCAT, Negative Thread



Code:	Length:	Diameter:	Price:
I24222	4 1/2"	3/32"	\$5.25
I25222	5"	1/8"	\$6.05

TPLO Reduction Pin



Code:	Thread:	Length:	Diameter:	Price:
I29020	65mm	155	2.0mm	\$6.40

Fixation Half Pin - Negative Thread



Code:	Description:	Length:	Price:
0.062HT	Threaded/Flat	6"	\$8.00

Wire and Pin Accessories

Orthopedic Wire

Code:	Length:	Dia.	Gauge:	Price:
CW 0.8	280mm	0.8	21	\$5.00
CW 1.0	280	1.0	19	\$5.00
CW 1.2	280	1.2	18	\$5.00

Cerclage Wire w/Loop (CW)



Code:	Length:	Dia.	Gauge:	Price:
CWX18	10 1/2 feet	1.2	18	\$9.50
CWX19	13 7/8	1.0	19	\$9.50
CWX20	19 1/2	0.9	20	\$9.50
CWX21	23 1/8	0.8	21	\$9.50
CWX22	28 1/2	0.7	22	\$9.50
CWX23	34 3/4	0.6	23	\$9.50
CWX24	44 5/8	0.5	24	\$9.50
CWX26	69 1/2	0.4	26	\$9.50
CWX28	19 1/2	0.4	28	\$9.50

Cerclage Wire Spool (CWX)



Code:	Length:	Dia.	Gauge:	Price:
CWC 0.4	10 meters	0.4	27	\$25.00
CWC 0.6	10	0.6	23	\$25.00
CWC 0.8	10	0.8	21	\$30.00
CWC 1.0	10	1.0	19	\$38.50
CWC 1.2	10	1.2	18	\$36.00

Cerclage Wire Coil (CWC)



Code:	Description:	Price:
I240002	1.6 X 200 mm Olive Wire	\$16.15
I440002	1.0 X 125 mm Olive Wire	\$9.65

Olive Wire



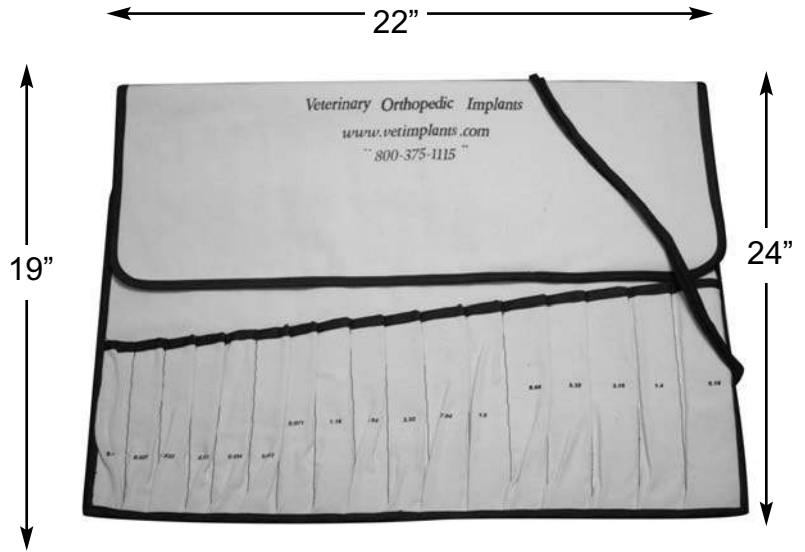
Code:	Description:	Price:
CB 2.7	Button for 2.7 Compression Plate	\$29.50
CB 3.5	Button for 3.5 Compression Plate	\$29.50
CB 4.5	Button for 4.5 Compression Plate	\$29.50

Cerclage Button (CB)

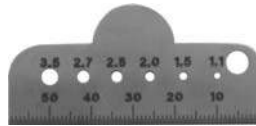


Wire and Pin Accessories

Pin Accessories



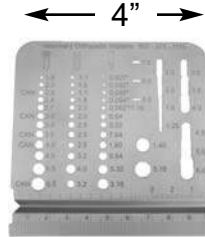
Code:	Description:	Price:
Pin Bag	Fits 0.027-9.64 pins Pin Bag 15 in. X 19 in.	\$40.00
Large Pin Bag	Fits 0.027-5.16 pins Large Pin Bag 22 in. X 24 in.	\$55.00



S&DG Screw & Drill Guide
60 mm

\$25.00

Gauge



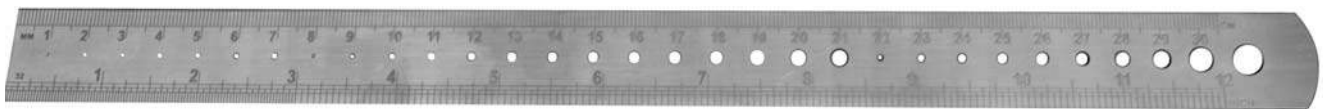
Measuring Gauge
for pins, screws & drill bits
4" X 4"

\$75.00



R, W & PG K-wire ruler & pin gauge
172 mm

\$20.00



KS-1171 12" Ruler, pin and
drill bit gauge

\$20.00